

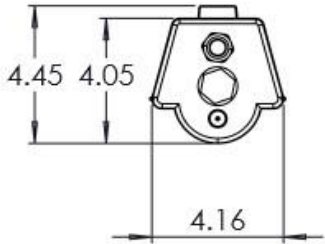
PROJECT:

NOTES:

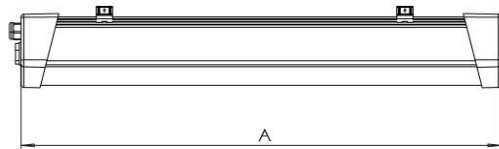
ORDERING INFORMATION:

**EXAMPLE** → PUAC-D - 48 - L - 40 - 9 - 50 - MV - BC10- CLE3- DM  
SERIES      NOM. LENGTH      SOURCE      LUMENS      CRI      KELVINS      VOLTAGE      OPTIONS      CONTROLS      DRIVER

**SHOP DRAWINGS**



	A
PUAC-D-24	25"
PUAC-D-48	47"
PUAC-D-96	91"



**ORDERING INFORMATION**

**SERIES**  
PUAC-D

**KELVIN**  
 30 3000K  
 35 3500K  
 40 4000K  
 50 5000K  
 TW Tunable White

**NOMINAL LENGTH**  
 24 24"  
 48 48"  
 96 96"

**VOLTAGE**  
 MV 120-277V  
 347 347V

**SOURCE**  
L LED

**OPTIONS**  
 BC# Black Cab Tire Wire #ft  
 CS# Chain Suspension Kit #ft  
 CM Center Mount Option  
 AC# Aircraft Suspension Kit #ft  
 WC# White Cab Tire Wire #ft

**LUMENS**

Lumen Package*	Nom. Lumens	Wattage
24"		
20	2,000	19
35	3,500	36
48"		
40	4,000	39
60	6,000	60
96"		
80	8,000	74
120	12,000	114

\*Other lumen packages available.

**CRI**

BLANK 80 CRI  
9 90 CRI

**FEATURES**

- > Robust luminaire built to withstand wet and harsh locations
- > Suitable for food processing and cold storage environments
- > Versatile fixture for indoor or outdoor, hot or cold, low mount or high mount applications
- > IP66 rated
- > Rated for -40 Celsius applications
- > Luminaire 100% assembled with NSF listed components (housings, lenses, latches and brackets)
- > 0.5 inch vent to maximize longevity and eliminate possible condensation (freezer applications)
- > Durable construction and long-lasting electrical components
- > Made in Canada

**APPLICATIONS**

- > Freezers
- > Food Processing Facilities
- > Manufacturing Plants
- > Parking garages
- > Cold Storage
- > Industrial applications
- > Pulp and Paper Mills
- > Swimming Pool Complexes
- > Warehouses

**CONTROLS**

Click on the following link for control options:  
<https://bit.ly/2C5IXqg>

**DRIVER**

BLANK Non-dimming applications  
 DM 0-10V dimming  
 DA DALI driver  
 Click on the following link for special driver options:  
<https://bit.ly/2Fq26qU>

LED

FIXTURE PERFORMANCE DATA

SPECIFICATIONS

**Housing/Reflector** – Single Piece Co-Extruded Lens and Housing

**Shielding** – Polycarbonate

**Finish** – Black polycarbonate housing suitable for outdoor use with respect to exposure to ultraviolet light, water exposure and immersion.

**Electrical** – High quality mid-power LED boards. L85 >50,000 hours.

**Mounting** – Suspended or surface

**Listings** –

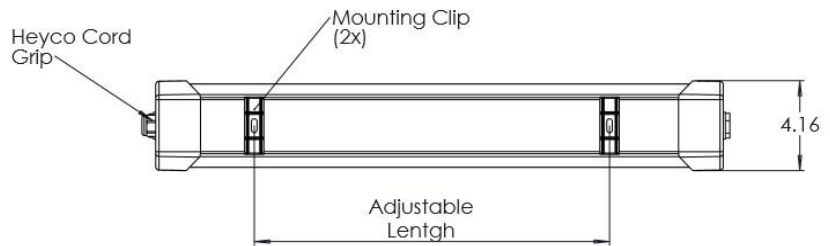
- cUL certified as luminaire suitable for dry or damp locations.
- DLC certified (consult factory for listing)
- IP65, IP66 rated.
- NSF compliant.

**Warranty** – 5-year limited warranty

LED PACKAGE	DELIVERED LUMENS	WATTAGE	EFFICACY (lm/W)
24"			
20	2,046	19	108
35	3,564	36	99
48"			
40	4,206	39	108
60	6,204	60	103
96"			
80	8,114	74	110
120	11,922	114	105

MULTIPLIER TABLE	
COLOR TEMPERATURE	
CCT/CRI	CONVERSION FACTOR
3000K / 80 CRI	0.95
3500K / 80 CRI	0.97
4000K / 80 CRI	1
5000K / 80 CRI	1.03

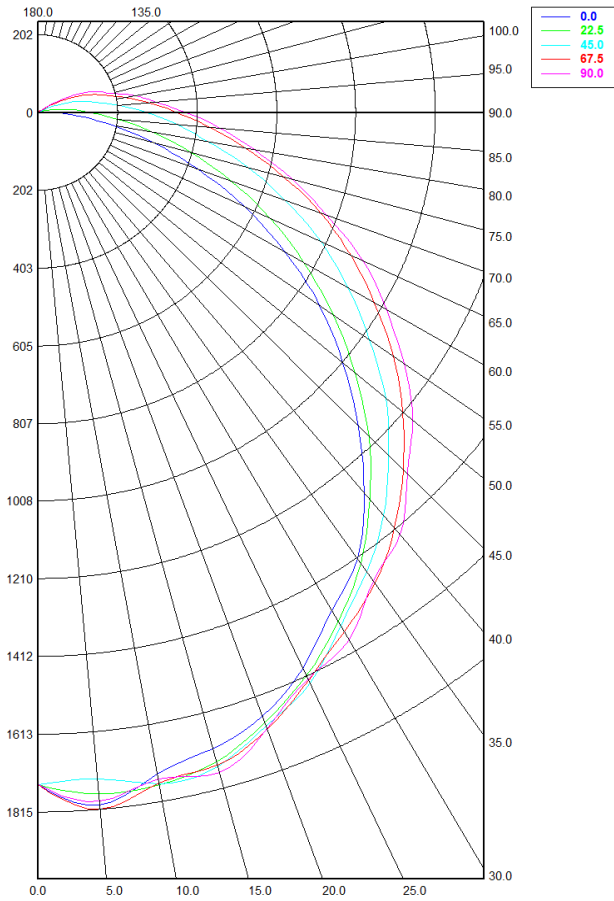
FIXTURE DETAILS



<

PHOTOMETRY

PUAC-D-48-LED-60-40-MVOLT Total Luminaire Output: 6,204 lumens; 60 Watts



**Candela Distribution**

	0.00°	22.50°	45.00°	67.50°	90.00°
0.00°	1,744.08	1,744.08	1,744.08	1,744.08	1,744.08
5.00°	1,803.41	1,774.90	1,736.05	1,814.95	1,793.87
10.00°	1,742.50	1,770.90	1,768.19	1,766.89	1,755.79
15.00°	1,708.84	1,744.24	1,757.04	1,753.67	1,772.96
20.00°	1,666.07	1,683.83	1,693.06	1,701.86	1,699.96
25.00°	1,589.48	1,610.97	1,633.73	1,624.50	1,621.10
30.00°	1,493.26	1,525.47	1,538.33	1,555.98	1,580.01
35.00°	1,413.83	1,428.48	1,455.15	1,492.36	1,484.76
40.00°	1,288.72	1,310.79	1,365.76	1,408.33	1,430.48
45.00°	1,151.35	1,188.51	1,259.12	1,311.25	1,326.01
50.00°	1,010.92	1,050.55	1,152.25	1,208.75	1,242.34
55.00°	873.64	917.29	1,027.76	1,100.42	1,133.89
60.00°	720.59	777.89	911.08	986.68	1,021.60
65.00°	576.35	649.41	792.41	876.98	912.62
70.00°	431.19	521.80	666.61	764.36	781.59
75.00°	304.46	402.58	550.79	643.82	666.38
80.00°	191.16	296.08	438.48	536.15	555.75
85.00°	99.12	202.20	354.17	435.38	462.51
90.00°	31.85	134.85	275.45	352.59	374.80

**Zonal Lumen Summary**

Zone	Lumens	% Fixture
0.00° - 10.00°	179.46	2.89%
10.00° - 20.00°	490.52	7.91%
20.00° - 30.00°	744.33	12.00%
30.00° - 40.00°	908.56	14.64%
40.00° - 50.00°	962.23	15.51%
50.00° - 60.00°	903.19	14.56%
60.00° - 70.00°	755.67	12.18%
70.00° - 80.00°	551.38	8.89%
80.00° - 90.00°	350.87	5.66%
90.00° - 100.00°	202.04	3.26%
100.00° - 110.00°	107.44	1.73%
110.00° - 120.00°	43.29	0.70%
120.00° - 130.00°	5.49	0.09%
130.00° - 140.00°	0.00	0.00%
140.00° - 150.00°	0.00	0.00%
150.00° - 160.00°	0.00	0.00%
160.00° - 170.00°	0.00	0.00%
170.00° - 180.00°	0.00	0.00%
0.00° - 90.00°	5,846.21	94.23%
90.00° - 180.00°	358.27	5.77%
0.00° - 180.00°	6,204.48	100.00%

**Spacing Criterion:**

Two luminaires, plane 0°	1.26
Two luminaires, plane 90°	1.32
Four luminaires	1.43