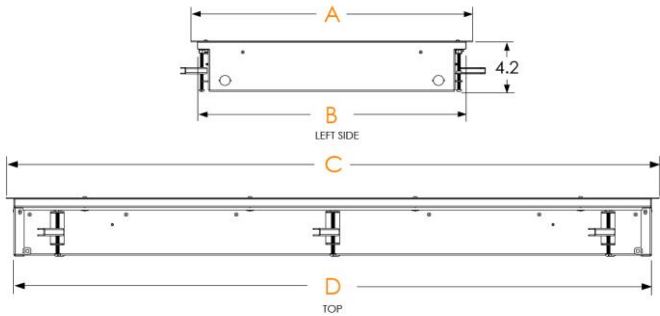


PROJECT:

NOTES:

ORDERING INFORMATION:

SHOP DRAWINGS



PRPA	A	B	C	D
1 x 4	11.7	10.3	48.8	46.2
2 x 2	23.7	22.6	23.7	22.6
2 x 4	23.7	22.6	47.4	48.3

ORDERING INFORMATION

SERIES

PRPA

HOUSING

X	12-Ga CRS (painted white)
H	14-Ga CRS (painted white)
M	16-Ga CRS (painted white)
L	18-Ga CRS (painted white)
HS	14-Ga SS (painted white)
MS	16-Ga SS (painted white)
LS	18-Ga SS (painted white)
HB	14-Ga SS (brushed)
MB	16-Ga SS (brushed)
LB	18-Ga SS (brushed)

NOMINAL LENGTH

14	12" x 48"
22	24" x 24"
24	24" x 48"

LUMENS

Lumen Package*	Nominal Lumens
12" x 48"	
30	3,000
40	4,000
50	5,000
24" x 24"	
30	3,000
40	4,000
50	5,000
24" x 48"	
40	4,000
60	6,000
80	8,000
120	12,000

*Other lumen packages available

CRI

8	80 CRI
9	90 CRI

KELVIN

30	3000K
35	3500K
40	4000K
50	5000K
TW	Tunable White

DIFFUSERS

FA1	Prismatic Acrylic
H5	White Opal Acrylic

SECURITY LENS (NOMINAL THICKNESS)

G1*	Prismatic Polycarbonate (1/8")
*Not to be use with FA1 diffuser	
M1	Clear Polycarbonate (1/8")
M3	Clear Polycarbonate (3/16")
M4	Clear Polycarbonate (1/4")
M5	Clear Polycarbonate (3/8")
M6	Clear Polycarbonate (1/2")
T5	Clear Tempered Glass (3/8")
T6	Clear Tempered Glass (1/2")

VOLTAGE

MV	120-277V
347	347V

OPTIONS

EM	Emergency Powerpack
AM	Antimicrobial Finish
NLA	Amber LED night light (300 lumens)
NLR	Red LED night light (300 lumens)
NL	White LED night light*
CH	Chicago Plenum Compliant Optional
BAA	Buy American Act Compliant (consult factory) Optional

*Night light on a separate circuit and 20% of initial lumen package and same color temperature

DRIVERS

ND	Non-dimming applications
D	0-10V dimming
D1	0-10V dimming to 1%
DA	DALI driver



ARMOR SERIES



Optional Optional

FEATURES

- > Specification-grade LED luminaire for anti-vandal and maximum security applications
- > Robust design with concealed hinges, tamper-resistant fasteners and contraband trapping backplate
- > Security lens secured with double frame fastened internally with multiple screws
- > Concealed piano hinge welded to door frame and fastened to backplate
- > Welded housing for additional structural strength
- > Minimum 80 CRI; color range 3000K - 5000K available
- > Multiple dimming protocols available
- > IK10 rated
- > Optional Chicago Plenum Compliant
- > Operating temperature (-40 to 45 Celsius / -22 to 113 Fahrenheit)

APPLICATIONS

- > Correctional facilities
- > Corridors
- > Locker rooms
- > Public areas
- > Stairwells
- > Rough service applications

LED

SPECIFICATIONS

Housing – Precision die-formed 12, 14,16, 18-gauge C.R.S.or stainless steel with continuously welded end plates

Door Frame – Single piece precision die formed frame with tamper-resistant fasteners and secure door frame to housing

Shielding – Variety of robust polycarbonate lenses available. Secured with internal frame.

Hinge – Piano style hinge with .500" knuckle and .125" pin welded to doorframe

Finish – Baked white enamel powder finish applied post production on all surfaces for smooth edges and safe handling

Electrical – High quality mid-power LED boards. L70 >72,000 hours reported / 129,200 hours calculated. L85 >50,000 hours.

Mounting – Recessed plaster ceiling. We strongly recommend to add wire hangers on each earthquake clips/brackets (see fixture details)

Listings –

■ cUL certified as luminaire suitable for dry or damp locations.

Warranty – 5-year limited warranty

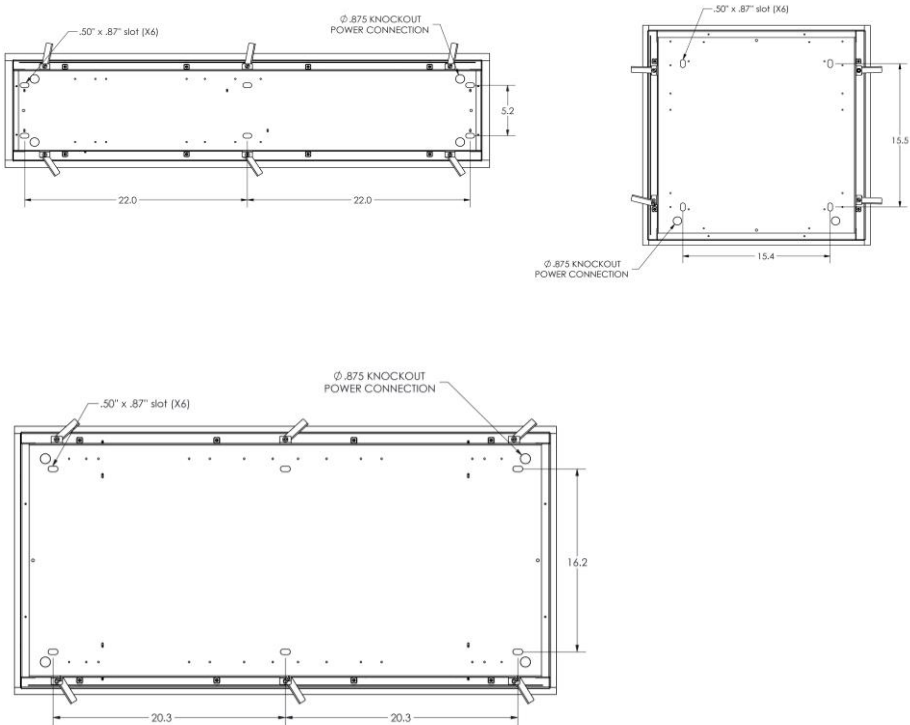
FIXTURE PERFORMANCE DATA

LED PACKAGE	DELIVERED LUMENS	WATTAGE
12" x 48"		
30	3,025	27
40	4,033	35
50	5,042	44
24" x 24"		
30	3,011	24
40	4,015	32
50	5,018	40
24" x 48"		
40	3,993	32
60	5,990	47
80	7,986	64
100	11,980	100

*Results based on 4000K, 80 CRI, Diffuser (A0), Lens (M1)

Approximate CCT Multiplier	80 CRI	90 CRI
2700K	0.9	0.75
3000K	0.95	0.8
3500K	0.97	0.82
4000K	1	
5000K	1.03	0.88

FIXTURE DETAILS

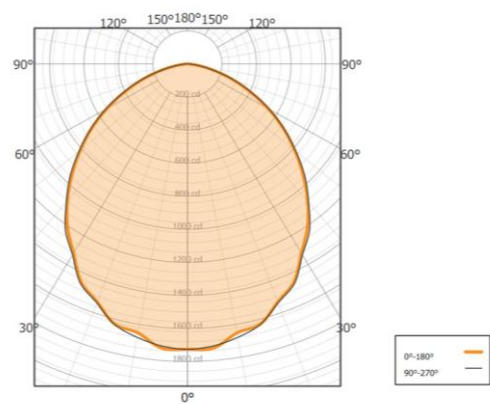


PRPA-22-40-40-H5-M1 / Total Luminaire Output: 4,015 lumens; 32 Watts

CANDELA POLAR PLOT

CONE OF LIGHT

CANDELA DISTRIBUTION



Mtg Height	Light Level	Beam Diameter
6.0 ft	48.0 fc	13.3 ft
8.0 ft	27.0 fc	17.7 ft
10.0 ft	17.3 fc	22.2 ft
12.0 ft	12.0 fc	26.6 ft
14.0 ft	8.8 fc	31.0 ft
16.0 ft	6.7 fc	35.5 ft

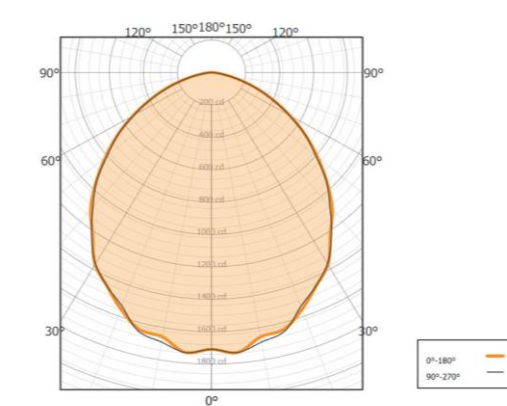
	0.00°	22.50°	45.00°	67.50°	90.00°
0.00°	1726.24	1726.24	1726.24	1726.24	1726.24
5.00°	1725.15	1689.92	1733.75	1710.56	1712.32
10.00°	1651.80	1672.39	1669.24	1677.05	1679.43
15.00°	1629.33	1618.76	1610.99	1624.52	1631.67
20.00°	1531.32	1555.28	1558.01	1541.23	1537.49
25.00°	1458.12	1449.80	1453.53	1458.95	1466.85
30.00°	1321.31	1337.53	1352.76	1345.83	1333.13
35.00°	1212.71	1218.37	1218.13	1222.72	1233.61
40.00°	1084.16	1090.84	1095.79	1087.21	1091.96
45.00°	947.29	952.28	948.76	959.27	963.80
50.00°	810.71	804.24	816.87	819.99	819.68
55.00°	678.15	673.28	677.67	680.68	681.63
60.00°	539.69	535.88	542.25	538.64	546.73
65.00°	402.89	404.36	406.19	408.99	409.36
70.00°	281.69	281.83	283.95	280.01	290.41
75.00°	171.59	172.92	170.69	174.16	169.79
80.00°	80.12	82.51	83.55	83.75	83.80
85.00°	25.23	24.93	25.73	24.36	24.51
90.00°	3.55	4.07	3.99	4.04	4.00

PRPA-22-40-40-H5-M1 / Total Luminaire Output: 3,993 lumens; 32 Watts

CANDELA POLAR PLOT

CONE OF LIGHT

CANDELA DISTRIBUTION



Mtg Height	Light Level	Beam Diameter
6.0 ft	47.5 fc	13.3 ft
8.0 ft	26.7 fc	17.8 ft
10.0 ft	17.1 fc	22.2 ft
12.0 ft	11.9 fc	26.6 ft
14.0 ft	8.7 fc	31.1 ft
16.0 ft	6.7 fc	35.5 ft

	0.00°	22.50°	45.00°	67.50°	90.00°
0.00°	1709.04	1709.04	1709.04	1709.04	1709.04
5.00°	1735.12	1710.94	1694.42	1746.21	1735.56
10.00°	1657.96	1688.62	1689.34	1691.71	1689.99
15.00°	1641.92	1625.50	1636.06	1624.70	1655.12
20.00°	1555.63	1562.53	1547.34	1551.58	1535.46
25.00°	1454.26	1481.62	1471.34	1455.51	1453.61
30.00°	1369.32	1353.46	1355.38	1354.05	1363.62
35.00°	1216.75	1226.25	1235.54	1224.25	1229.12
40.00°	1104.58	1094.59	1089.55	1080.18	1082.17
45.00°	960.75	959.31	959.00	945.00	957.08
50.00°	813.15	815.21	811.32	808.94	800.02
55.00°	673.82	677.83	668.82	666.91	672.96
60.00°	531.50	532.88	535.79	529.96	526.97
65.00°	396.24	397.74	396.38	393.69	394.07
70.00°	277.16	275.42	269.91	270.70	269.50
75.00°	164.51	160.82	160.07	159.33	157.71
80.00°	71.10	73.12	70.89	72.53	73.96
85.00°	17.91	18.09	18.72	18.46	18.44
90.00°	2.25	2.77	2.73	2.91	2.55